

UV-Win GLP

SOFTWARE

UV-Win is a powerful, intuitive Software product used for connectivity to the PG Instruments range of bench top UV-Vis Spectrophotometers.

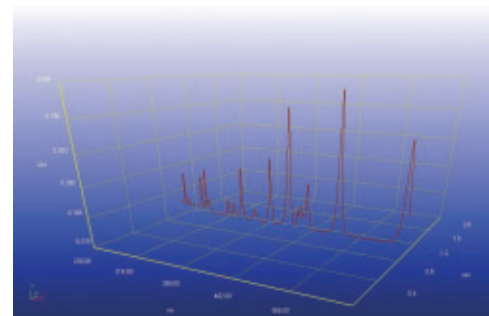
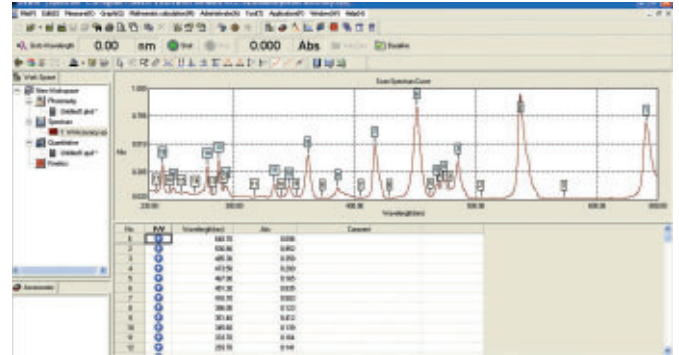
UV-Win GLP offers all of the features and functionality of UV-Win whilst also offering extensive administrative capabilities along with a detailed audit trail.

The UV-Win software offers complete instrument control along with data acquisition and a whole host of mathematical tools for interpretation of measurement results. The UV-Win software is separated into four key workspaces:

- Spectral Analysis.
- Quantitative Analysis.
- Kinetic Analysis.
- Photometric Analysis.

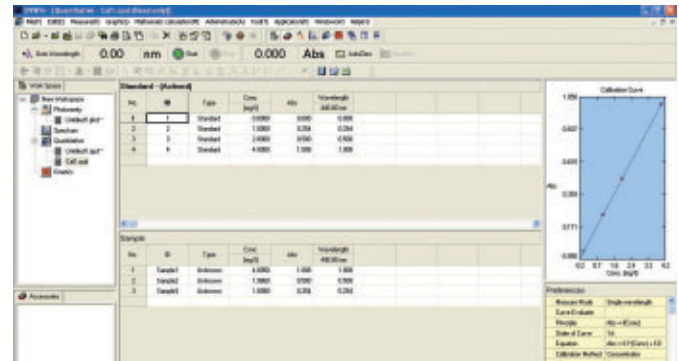
SPECTRUM WORKSPACE

- Use the spectrum workspace to scan across a userdefined spectral range measuring in either absorbance or transmission.
- Use the "Peak Pick" tool to determine the wavelength at which peaks and valleys have occurred whilst also being able to determine their amplitude.
- View spectral overlay in the 3D display mode.
- Perform 1st, 2nd, 3rd and 4th order differentiation on sample scans for Derivative Spectroscopy.
- Export measurement data into Word, Excel, CSV and ASCII formats.
- Create method files for routine analysis whilst also being able to save measurement data.



QUANTITATIVE WORKSPACE

- Use the Quantitative workspace to determine the concentration of unknown samples.
- Create a calibration curve using a series of standard solution or by directly entering the coefficients for the calibration curve equation.
- Specify 1st, 2nd, 3rd and 4th order correlation for the best calibration curve fit.
- Set Quality Control monitors to take user specified action in the event of measurement results falling outside user defined limits.
- Export measurement data into Word, Excel, CSV and ASCII formats.
- Create method files for routine analysis whilst also being able to save measurement data.



Set quantitation parameters

Accessories: Quality control Simple Calculation

Measurement: Calibration curve Instrument

Curve equation: $Abs = K1 * Conc + K0$ Equation Order: 1st

Input Type: Conc Values

Conc. unit: mg/l Blank Extension Check Box Zero Interceptor

Curve evaluation: None

Calibration method: Concentration method Coefficient method

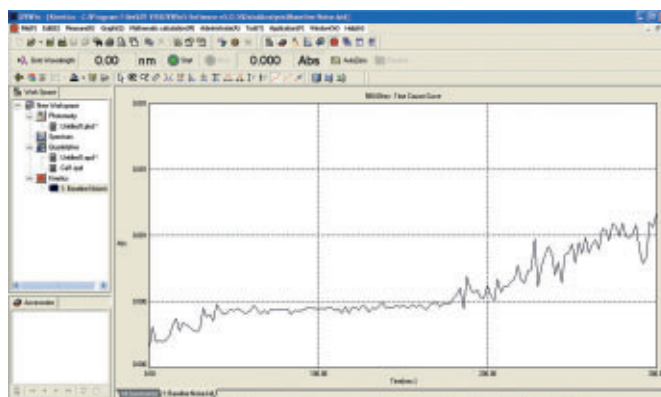
K1: [] K0: [] K2: []

K3: [] K4: []

Buttons: OK, Cancel, Help

KINETIC WORKSPACE

- Monitor the change of Absorbance or Transmission as a function of time for Enzyme type reactions.
- Use in conjunction with a Flowcell for sample introduction or Peltier water circulator for temperature control.
- Specify data intervals and acquisition time for up to 24 hour reactions.
- Export measurement data into Word, Excel, CSV and ASCII formats.
- Create method files for routine analysis whilst also being able to save measurement data.



PHOTOMETRIC WORKSPACE

- Perform a series of sequential fixed wavelength measurements in either Absorbance or Transmission.
- Automate sample measurements by configuring the instrument cell changer.
- Calculate concentration of unknown samples quickly using the "Simple Calculation" option where complete calibration is not required.
- Automatically calculate statistics like standard deviation, relative standard deviation, and averages.
- Export measurement data into Word, Excel, CSV and ASCII formats.
- Create method files for routine analysis whilst also being able to save measurement data.

No.	Wavelength (nm)	Absorbance	Transmission
1	1.0	0.000	0.999
2	1.5	0.001	0.999
3	2.0	0.002	0.998
4	2.5	0.003	0.997
5	3.0	0.004	0.996
6	3.5	0.005	0.995
7	4.0	0.006	0.994
8	4.5	0.007	0.993
9	5.0	0.008	0.992
10	5.5	0.009	0.991

Setting photometric parameters

Instrument | Accessories | Quality control

Measurement | Simple calculation

Enable simple calculation

Calculation formula: [] Title: []

Symbol: [A B C D E F G H I J] [K L M N O P Q R S T] [U V W X Y Z] [Clear] [Enter] [Delete] [Close]

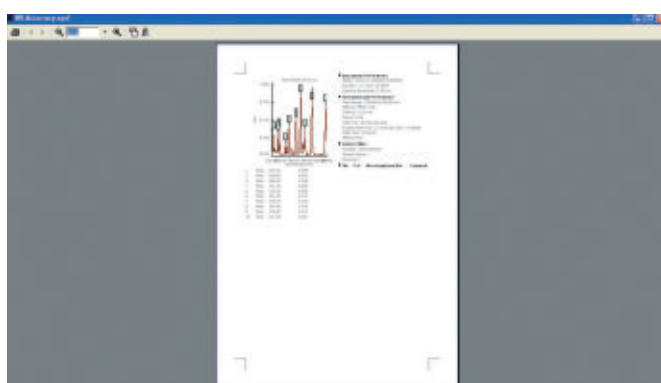
Formula: [] Title: [] Formula: []

Display: [Formula]

OK Cancel Help

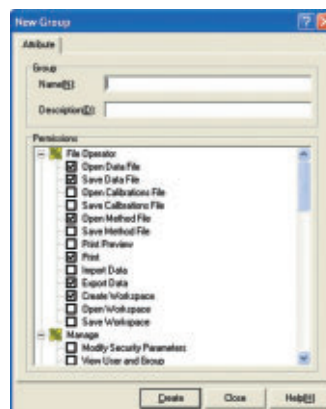
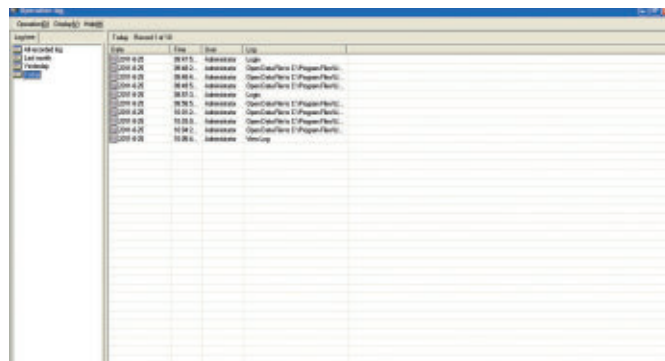
REPORTING

- Produce reports for photometric, spectrum, kinetic and quantitative measurement data.
- Include or remove spectra, calibration curves along with samples measurement tables.



ADMINISTRATION

- Administrative settings can be made where Analysts may require conformity to GLP/GMP/GRP.
- Create User groups specifying exactly what actions they are able to perform.
- Add New Users to custom User Groups to determine their privilege settings.
- Automatically log software activity in an Audit Trail.
- Use Password control to ensure Users are logged in for instrument usage.



CERTIFICATION

UV-Win GLP has been evaluated and tested by a third party software validation specialist. As a result it was found that UV-Win GLP offers all of the features and functions required for use in compliance with the guidance specified in:

- 21CFR Part 11- Electronic Records; Electronic Signatures.
- Guidance for Industry Part 11, Electronic Records; Electronic Signatures — Scope and Application, August 2003.

