



Professional Inspection and Retrieval System – 2015



GP15

Go For The Gold!

Professional Inspection and Retrieval System



91582
Telescoping
Lighted Magnetic
Pick-Up

91555
Telescoping
Lighted Magnetic
Pick-Up with Small
Round Mirror

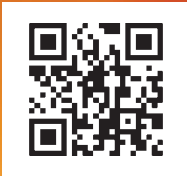
91557
Telescoping
Lighted Magnetic
Pick-Up with Large
Round Mirror

90557
Telescoping
Round
Inspection
Mirror

92557
Telescoping
Lighted
Round
Inspection
Mirror

The line consists of 13 different products that help professionals and DIYers alike to inspect hard-to-see areas and retrieve hard-to-reach objects. The tools range from inspection mirrors to mechanical and magnetic pick-ups with goose-neck heads in lighted or non-lighted telescoping styles.

NEW!



92560
Telescoping
Lighted
Rectangular
Inspection
Mirror



90560
Telescoping
Rectangular
Inspection
Mirror



91560
Telescoping
Lighted
Rectangular
Inspection
Mirror



91581
Mini-
Telescoping
Lighted
Magnetic
Pick-Up



91383
Telescoping
Magnetic
Pick-Up

ALL TOOLS FEATURE:

- Heavy-duty anodized aluminum bodies for rugged worksite use (in a gold color)
- Grooved telescoping stainless steel shaft; design prevents rotational slipping to ensure secure positioning and pick-up
- Flexible-obedient gooseneck for access into hard-to-reach areas



LIGHTED TELESCOPING INSPECTION MIRROR – 92557

Ideal for inspectors, electricians, plumbers, HVAC technicians, automotive professionals and homeowners. The perfect tool for inspecting objects in darkened areas that are obstructed from your direct line-of-sight.

- 2 LED lights illuminate hard-to-see areas
- Extends from 8 in. to 23 in. (203mm to 585mm)
- Flexible Obedient Gooseneck adjusts to all angles
- Heavy-duty anodized aluminum body
- Grooved Stainless Steel shaft prevents rotational slipping
- Clear polished round glass mirror for flawless reflection
- 2 “CR2032” batteries included



92557



UPC	NO.	SIZE
02310 0	92557	1-7/8" dia. (48mm)

LIGHTED TELESCOPING INSPECTION MIRROR – 92560

Ideal for inspectors, electricians, plumbers, HVAC technicians, automotive professionals and homeowners. The perfect tool for inspecting objects in darkened areas that are obstructed from your direct line-of-sight.

- 2 LED lights illuminate hard-to-see areas
- Extends from 9 in. to 24 in. (230mm to 610mm)
- Flexible Obedient Gooseneck adjusts to all angles
- Heavy-duty anodized aluminum body
- Grooved Stainless Steel shaft prevents rotational slipping
- Clear polished rectangular glass mirror for flawless reflection
- 2 “CR2032” batteries included



92560

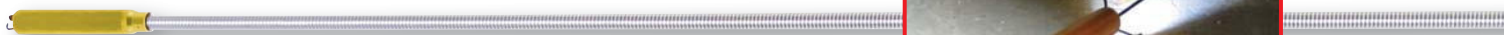
UPC	NO.	SIZE
02311 7	92560	1-1/2" x 2-1/2" (38 x 64mm)



90390 – 24" (610mm)



90396 – 24" (610mm)



90399 – 36" (914mm)



TELESCOPING INSPECTION MIRROR – 90557

Ideal for inspectors, electricians, plumbers, HVAC technicians, automotive professionals and homeowners. The perfect tool for inspecting objects or areas that are obstructed from your direct line-of-sight.

- Extends from 8 in. to 23 in. (203mm to 585mm)
- Flexible Obedient Gooseneck adjusts to all angles
- Heavy-duty anodized Aluminum Body
- Grooved Stainless Steel shaft design prevents rotational slipping
- Clear polished round glass mirror for flawless reflection



90557

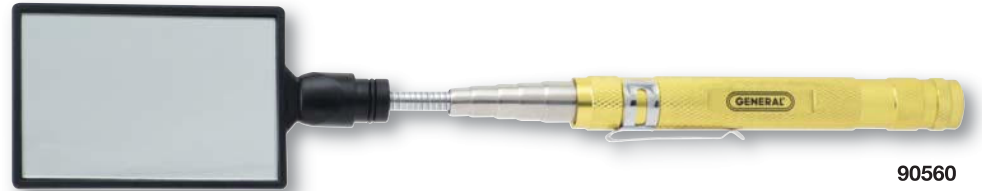
UPC	NO.	SIZE
02309 4	90557	2-1/4" Dia. (57mm)



TELESCOPING INSPECTION MIRROR – 90560

Ideal for inspectors, electricians, plumbers, HVAC technicians, automotive professionals and homeowners. The perfect tool for inspecting objects or areas that are obstructed from your direct line-of-sight.

- Extends from 8 in. to 23 in. (203mm to 585mm)
- Flexible Obedient Gooseneck adjusts to all angles
- Heavy-duty anodized aluminum body
- Grooved Stainless Steel shaft prevents rotational slipping
- Clear polished rectangular glass mirror for flawless reflection



90560

UPC	NO.	SIZE
02308 7	90560	1-7/8" x 2-7/8" (48 x 73mm)



LIGHTED MECHANICAL & MECHANICAL/MAGNETIC PICK-UPS – 90390, 90396, 90399

Lighted mechanical pick-ups are ideal for retrieving items from dark or hard-to-reach areas.

- No. 90390 – Lighted Magnetic/Mechanical Pick-Up, 24" (610mm) with a magnet that lifts 2 lbs. and a flexible-obedient black steel shaft
- No. 90396 – Lighted Mechanical Pick-Up 24" (610mm) with flexible silver steel shaft
- No. 90399 – Lighted Mechanical Pick-Up 36" (914mm) with flexible silver steel shaft
- Push on powerful LED light
- Continued pushing plunger opens strong spring steel retrieval claw
- Comfortable ergonomically designed aluminum trigger handle
- Includes 3 "LR41" batteries

UPC	NO.	
02315 5	90390	24" (610mm) Patented
02214 1	90396	24" (610mm) Patented
02215 8	90399	36" (914mm) Patented

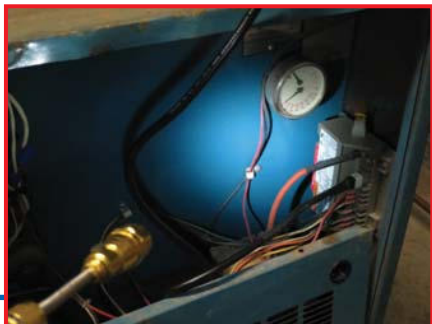


POCKET LIGHTED TELESCOPING MAGNETIC PICK-UP – 91581

Ideal for inspectors, electricians, plumbers, HVAC technicians, automotive professionals and homeowners to illuminate and retrieve ferrous objects from hard-to-reach areas.



91581



- 1 LED light illuminates hard-to-see areas
- Extends from 6 in. to 14 in. (152mm to 356mm)
- Flexible Obedient Gooseneck adjusts to all angles
- Magnet easily lifts 3 lbs. (1.36kg)
- Heavy-duty anodized aluminum body
- Stainless steel shaft
- 3 “LR44” batteries included

UPC	NO.	PULL
02212 7	91581	3 lbs. (1.36kg)

LIGHTED TELESCOPING MAGNETIC PICK-UP – 91582

Ideal for inspectors, electricians, plumbers, HVAC technicians, automotive professionals and homeowners to illuminate and retrieve ferrous objects from hard-to-reach-areas.



91582



- 3 LED lights illuminate hard-to-see areas
- Telescopes from 7 in. to 22 in. (178 – 560mm)
- Flexible Obedient Gooseneck adjusts to all angles
- Magnet easily lifts 4 lbs. (1.80kg)
- Heavy-duty anodized aluminum body
- Grooved stainless steel shaft prevents rotational slipping
- 4 “LR44” batteries included

UPC	NO.	PULL
02213 4	91582	4 lbs. (1.8kg)

HEAVY-DUTY TELESCOPING MAGNETIC PICK-UP – 91383

Ideal for inspectors, electricians, plumbers, HVAC technicians, automotive professionals and homeowners to retrieve ferrous objects from hard-to-reach-areas.



91383



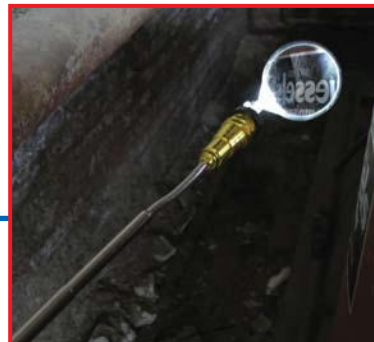
- Extends from 6 in. to 22 in. (152 – 560mm)
- Flexible Obedient Gooseneck adjusts to all angles
- Magnet easily lifts 5 lbs. (2.26kg)
- Heavy-duty anodized aluminum body
- Grooved stainless steel shaft prevents rotational slipping

UPC	NO.	PULL
02216 5	91383	5 lbs. (2.26kg)

LIGHTED MAGNETIC TELESCOPING PICK-UP WITH SMALL MIRROR – 91555

Ideal for inspectors, electricians, plumbers, HVAC technicians, automotive professionals and homeowners to illuminate and to retrieve ferrous objects from hard-to-reach areas. The perfect tool for inspecting objects or areas that are obstructed from your direct line-of-sight.

- 3 LED lights illuminate hard-to-see areas
- Extends from 6 in. to 22 in. (150mm to 560mm)
- Flexible Obedient Gooseneck adjusts to all angles
- Magnet easily lifts up to 4 lbs. (1.80kg)
- Heavy-duty anodized aluminum body
- Grooved Stainless Steel shaft design prevents rotational slipping
- Includes small round glass mirror attachment for flawless reflection
- 4 “LR44” batteries included



91555

UPC	NO.	SIZE	PULL
02314 8	91555	1.375" dia. (35mm)	4 lbs. (1.80kg)

LIGHTED MAGNETIC TELESCOPING PICK-UP WITH LARGE MIRROR – 91557

Ideal for inspectors, electricians, plumbers, HVAC technicians, automotive professionals and homeowners to illuminate and to retrieve ferrous objects from hard-to-reach areas. The perfect tool for inspecting objects or areas that are obstructed from your direct line-of-sight.

- 3 LED lights illuminate hard-to-see areas
- Extends from 6 in. to 22 in. (150 mm to 560mm)
- Flexible Obedient Gooseneck adjusts to all angles
- Magnet easily lifts up to 4 lbs. (1.80kg)
- Heavy-duty anodized aluminum body
- Grooved Stainless Steel shaft prevents rotational slipping
- Includes large round glass mirror attachment for flawless reflection
- 4 “LR44” batteries included



91557

UPC	NO.	SIZE	PULL
02313 1	91557	2.25" dia. (57mm)	4 lbs. (1.80kg)

LIGHTED MAGNETIC PICK-UP WITH MIRROR – 91560

Ideal for inspectors, electricians, plumbers, HVAC technicians, automotive professionals and homeowners to illuminate and retrieve ferrous objects from hard-to-reach areas. The perfect tool for inspecting objects or areas that are obstructed from your direct line-of-sight.

- 3 LED lights illuminate hard-to-see areas
- Extends from 6 in. to 22 in. (150mm to 560mm)
- Flexible Obedient Gooseneck adjusts to all angles
- Magnet easily lifts up to 4 lbs. (1.80kg)
- Heavy-duty anodized aluminum body
- Grooved Stainless Steel shaft prevents rotational slipping
- Includes large rectangular glass mirror attachment for flawless reflection
- 4 “LR44” batteries included



91560

UPC	NO.	SIZE	PULL
02312 4	91560	2" x 3" (51 x 76mm)	4 lbs. (1.80kg)



Specialty Tools & Instruments

GENERAL TOOLS & INSTRUMENTS
80 White Street, New York, NY 10013-3567
PHONE (212) 431-6100 • FAX (212) 431-6499 • TOLL FREE (800) 697-8665
e-mail: gentools@generaltools.com
www.generaltools.com

Catalog No. GP15 Printed in USA 5/15

©2015 GENERAL TOOLS & INSTRUMENTS

Not responsible for typographical errors.